

The background is a dark teal color. There are several decorative elements: a horizontal teal line near the top left, a vertical teal line on the right side, and two overlapping teal circles in the upper right quadrant. The text 'recruitAbility.AI' is positioned in the upper left area.

recruitAbility.AI

AI Consulting Use Case

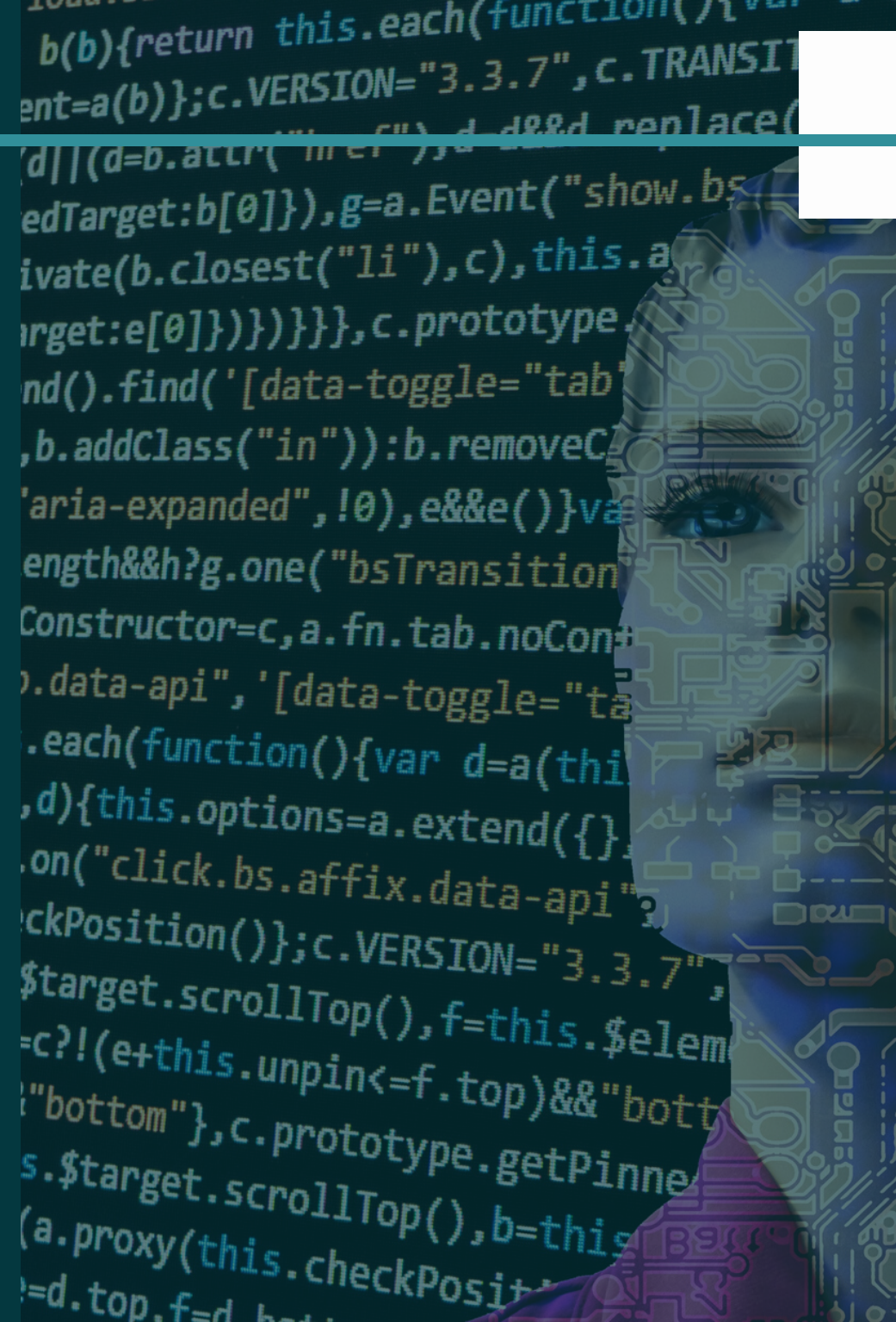


PROBLEM

An Austin based consumer product company that is looking to utilize the massive pile of data they collect on a daily basis. They are looking to make a data driven decision on what direction to take their business.

They faced some hurdles:

- They don't have the funds to engage a traditional consulting firm
- The technical team is focused on their customer facing platform
- Their core competency is their business, not AI solutions

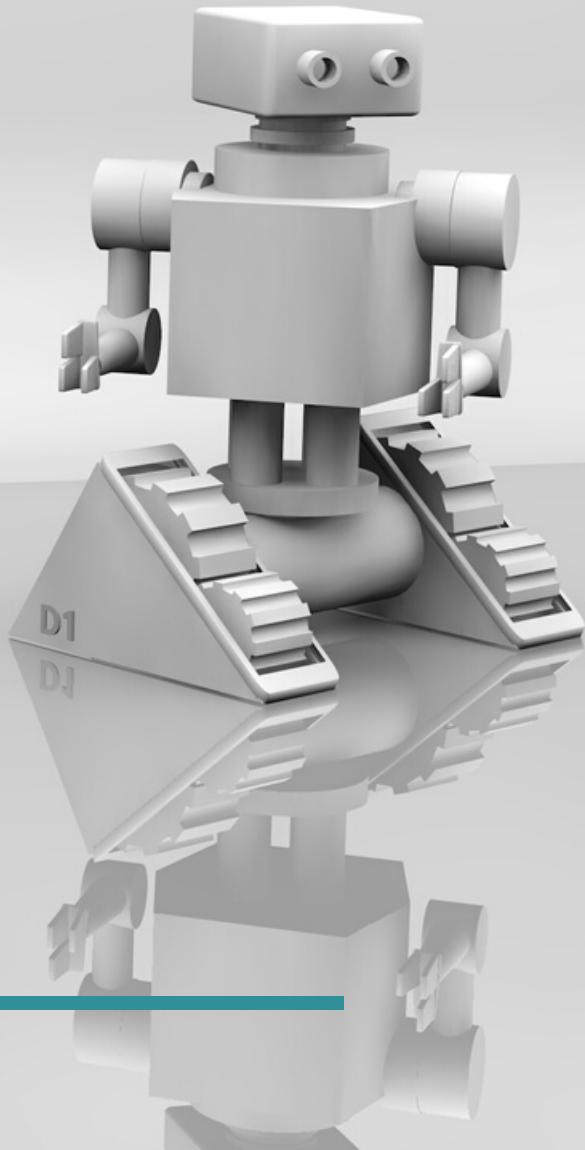


A(I) SOLUTION

recruitAbility.ai was engaged to devise and execute a solution.

HOW WE DID IT

- Engaged a 2 day kick off moderator led meeting to understand the root of the problem
- Concluded several scenarios where AI is necessary and how it could accelerate their business
- Constructed a 6 month engagement to integrate AI into their tech stack
- Developed a coinciding hiring plan to ensure long term success





OUTCOME

HAPPY ENGINEERING TEAM

The technology team is excited about integrating AI into their stack along with upgrading their skill sets.

HAPPY EXECUTIVE TEAM

They are now able to articulate to their investors a clear, data driven path for the next growth phase.

RECRUITABILITY.AI

We brought in the right experts to help the company and set them up for future success.